

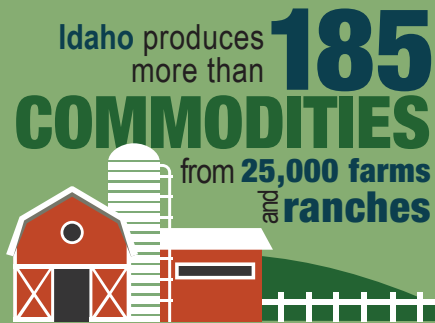
## TOTAL CASH RECEIPTS

Year	Dollars (1,000)
2020	\$8,108,008
2019	\$8,047,933
2018	\$7,475,824
2017	\$7,332,409
2016	\$7,230,192
2015	\$7,463,887
2014*	\$8,791,276

\*Record Setting Year

## 2020 Cash Receipts Breakdown Livestock & Crops

	Dollars (1,000)
Livestock cash receipts	\$4,748,169
Crops cash receipts	\$3,359,839
Total cash receipts	\$8,108,008



## 2019 IDAHO ORGANIC PRODUCTION

Number of Farms	240
Cropland Acres	138,830
Pasture/Rangeland	41,902
<b>Total Acres</b>	<b>180,732</b>
<b>Total Sales</b>	<b>\$205,968,000</b>

Source: USDA NASS 2019 Survey

## 2020 IDAHO LIVESTOCK

	Total head
Cattle & Calves	2,500,000
•Milk Cows - 646,000	
Sheep & Lambs	230,000
Hogs & Pigs	32,000



IDAHO LIVESTOCK

## 2020 IDAHO FARMS AND FARMLAND

Number of Farms/Ranches	24,600
Land in Farms/Ranches (acres)	11,500,000
Average Size of Farm/Ranch (acres)	467

Source: USDA NASS 2021 Annual Statistical Bulletin

## 2017 AGRICULTURE CENSUS

Irrigated Land (acres)	3,398,266
Average Age of Operator	56

Idaho's renowned wine and viticulture industry is distinguished by three American Viticulture Areas (AVA):

Snake River Valley AVA - Approved 2007  
Eagle Foothills AVA - Approved 2015  
Lewis-Clark AVA - Approved 2016



## 2020 NATIONAL RANKINGS

Commodities	Rank	% of U.S.
Peppermint oil	1	40
Potatoes	1	32
Barley	1	32
Hay, alfalfa	1	9
Sugarbeets	2	20
Hops	2	17
Onion, dry	4	14
Wheat, spring	4	8
Lentils	4	5
Dry edible peas	4	4
Wheat, all	5	6
Wheat, winter	5	6
Dry edible beans	5	5
Corn silage	6	6
Haylage	8	5
Hay, all	9	4

## Livestock and Livestock Products

Cheese	3	8
Milk	3	7
Milk cows	3	7
Wool	7	6
Sheep and lambs	7	4
Honey	9	3
Cattle and calves, all	11	3

Source: USDA NASS 2021 Annual Statistical Bulletin

# IDAHO



Idaho State Department of Agriculture  
PO Box 7249, Boise, Idaho 83707  
P: 208.332.8530 - F: 208.334.2879

www.agri.idaho.gov  
www.idahopreferred.com



Updated: May 2022

## AGRICULTURE IN IDAHO

Idaho agriculture is diverse, abundant and rooted in our history. The state has nearly **25,000 farms and ranches** which produce more than **185 different commodities**. Idaho ranks in the top ten in the nation in 30 of those commodities. Idaho is the **third-largest agricultural state in the West** and **second in net farm income**. Agriculture remains a fundamentally important part of Idaho's economy, communities and way of life contributing:

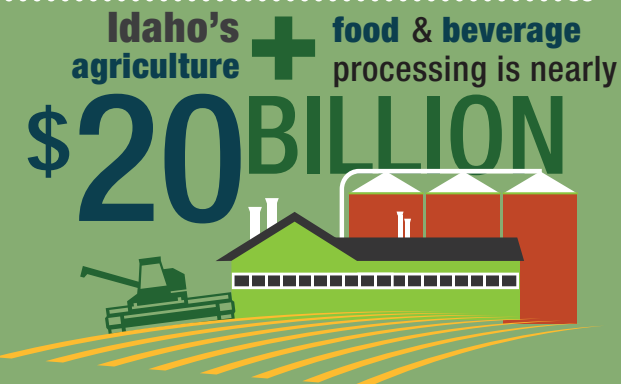
2020 Agriculture Cash Receipts: **\$8.1 billion**  
+  
Processed Food & Beverage Sales: **\$11.6 billion\***

From fries to cheese to wine, Idaho is producing quality products to feed the world and fuel our state. Together, agriculture and food processing generates **17% of Idaho's total economic output** in sales and **12.5% of GDP**.

\*Source: IMPLAN 2019 data

Idaho seed production is recognized globally. Idaho grows **70% of the world's hybrid temperate sweet corn seed** and ranks among the leading suppliers of alfalfa, field bean, garden bean, and Kentucky bluegrass seed in the nation.

Idaho vegetable seed production also includes carrot, onion, turnip, lettuce and many more.



## 2020 TOP IDAHO AGRICULTURE EXPORTS

Commodity	\$ (Millions)
Dairy products	\$473.73
Wheat	\$392.31
Processed vegetables	\$264.56
Beef and veal	\$191.67
Fresh vegetables	\$160.33
Feeds and other feed grains	\$142.93
Processed grain products	\$82.43
Other livestock products	\$53.67
Corn	\$24.96
Hides and skins	\$15.92
Other poultry products	\$11.29
Oilseeds	\$8.38
Pork	\$8.16
Vegetable oils	\$0.79
Other plant products	\$484.60
Total agricultural exports	\$2,315.72

Source: USDA ERS 2021 State Ag Exports - published Oct 2021



Try to eat this

**EVERY DAY**

If Idahoans had to eat all products produced within the state, every resident would need to consume



Source: USATRADE 2021 data

Over **\$2 Billion** of Idaho's produce, grains, meats, dairy & seeds are sold **WORLDWIDE**



Country	% Market Share
Canada	32%
Mexico	21%
China	8%
Netherlands	6%
Japan	5%
Korea, South	4%
Vietnam	2%
Philippines	2%
Denmark	2%
Indonesia	2%
Australia	1%
Malaysia	1%
Thailand	1%
Belgium	1%
Peru	1%
Other	13%

## 2020 TOP IDAHO COMMODITIES

Commodity	Acres Harvested	Value of Production (\$1000)
Milk (all)	N/A	\$2,988,344
Cattle & Calves	N/A	\$1,251,849
Potatoes	299,500	\$981,162
Hay, all	1,300,000	\$816,515
Wheat	1,164,000	\$576,185
Sugarbeets	169,000	\$364,014
Barley	500,000	\$270,600
Corn, grain	130,000	\$121,589
Hops	9,300	\$99,703
Onions	12,900	\$68,331
Dry Beans	66,000	\$50,944
Peppermint	16,500	\$34,650
Hogs	N/A	\$19,342
Dry peas	34,000	\$11,560
Lentils	28,000	\$7,717
Honey	N/A	\$6,554
Oats	16,000	\$5,141
Haylage	165,000	\$1,798

Source: USDA NASS  
2021 Idaho Annual Statistical Bulletin / Agri-Facts

Nearly **1 OUT OF 6 GALLONS** becomes globally exported dairy products.