

IDAHO AGRICULTURE

GROWING FOR THE WORLD



top EXPORT DESTINATIONS

32%

CANADA

21%

MEXICO

8%

CHINA

For Idaho Agriculture in 2021 were

NETHERLANDS
6%

JAPAN
5%

SOUTH KOREA
4%

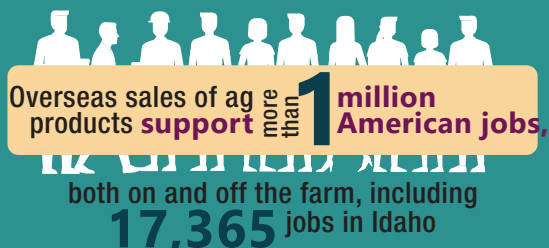
For all U.S. STEERS and HEIFERS

sold, \$ **431** million of their value can be attributed to Exports

In 2020 EXPORT SALES

of Idaho Food & Agriculture products totaled

over \$ **2.3** Billion



IDAHO

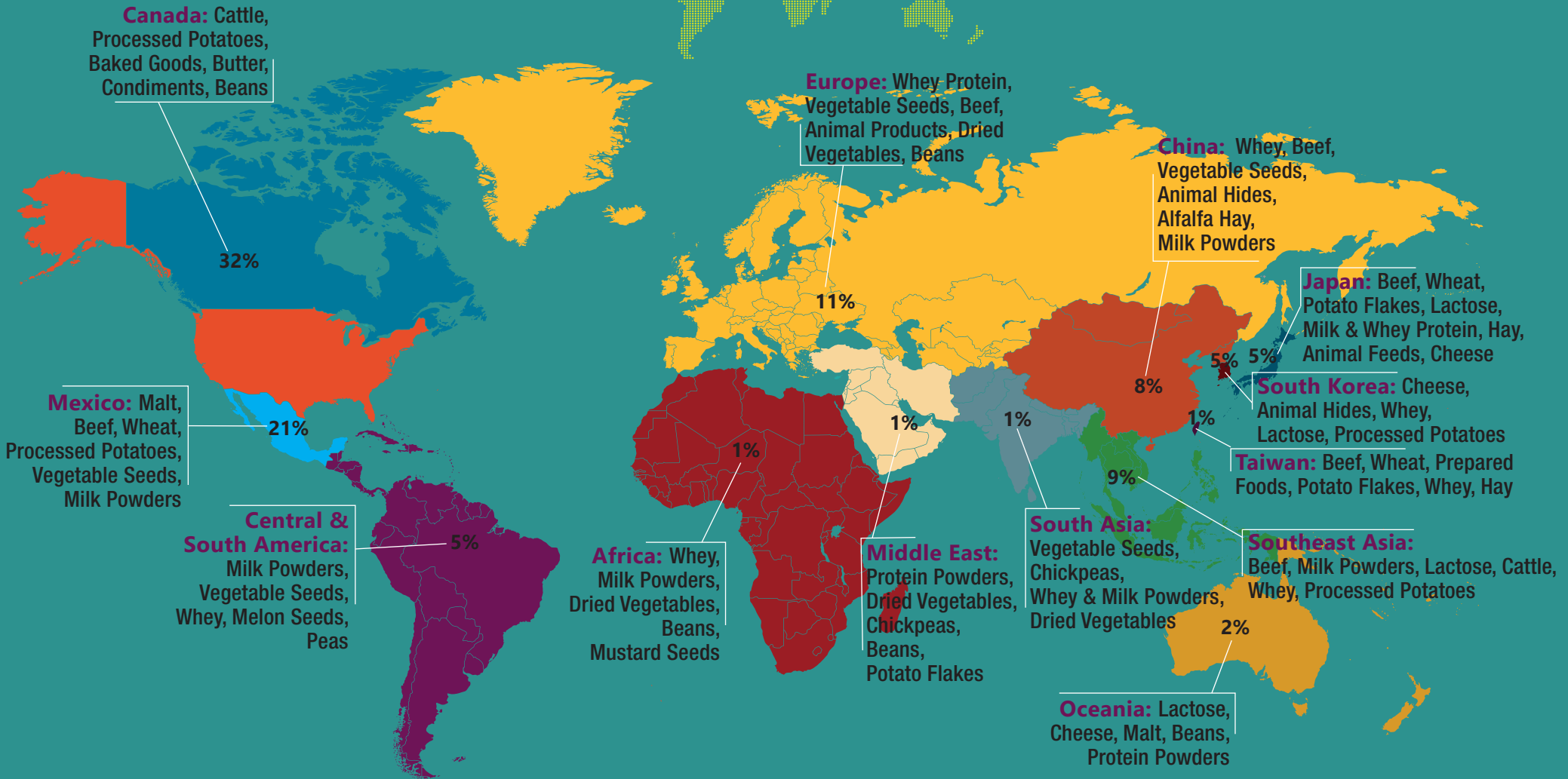
Idaho State Department of Agriculture

PO Box 7249, Boise, ID, USA 83707 • P: 208.332.8530 • F: 208.334.2879 • agri.idaho.gov

To find Idaho products, local places that sell Idaho product, recipes or local events, visit idahopreferred.com updated: June 2022

IDAHO AGRICULTURE

GROWING FOR THE WORLD



IDAHO

Idaho State Department of Agriculture

PO Box 7249, Boise, ID, USA 83707 • P: 208.332.8530 • F: 208.334.2879 • agri.idaho.gov

To find Idaho products, local places that sell Idaho product, recipes or local events, visit idahopreferred.com

