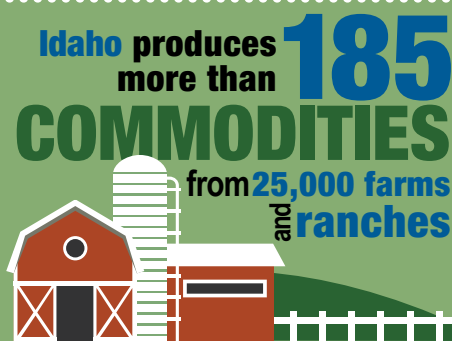


TOTAL CASH RECEIPTS

Year	Dollars (1,000)
2021	\$8,576,652
2020	\$8,073,878
2019	\$8,038,390
2018	\$7,470,650
2017	\$7,332,409
2016	\$7,230,192
2015	\$7,463,887

2021 Cash Receipts Breakdown Livestock & Crops

	Dollars (1,000)
Livestock cash receipts	\$4,938,587
Crops cash receipts	\$3,638,065
Total cash receipts	\$8,576,652



2021 IDAHO ORGANIC PRODUCTION

Number of Farms	245
Cropland Acres	177,132
Pasture/Rangeland	38,536
Total Acres	215,668
Total Sales	\$219,655,000

Source: USDA NASS 2021 Organic Survey

2021 IDAHO LIVESTOCK

	Total head
Cattle & Calves	2,550,000
• Milk Cows - 652,000	
Sheep & Lambs	230,000
Hogs & Pigs*	32,000



IDAHO LIVESTOCK

*2020 Idaho Hog numbers

2021 IDAHO FARMS AND FARMLAND

Number of Farms/Ranches	24,600
Land in Farms/Ranches (acres)	11,500,000
Average Size of Farm/Ranch (acres)	467

Source: USDA NASS 2021 Annual Statistical Bulletin

2017 AGRICULTURE CENSUS

Irrigated Land (acres)	3,398,266
Average Age of Operator	56

Idaho's renowned wine and viticulture industry is distinguished by three American Viticulture Areas (AVA):

- Snake River Valley AVA - Approved 2007
- Eagle Foothills AVA - Approved 2015
- Lewis-Clark AVA - Approved 2016



2021 NATIONAL RANKINGS

Commodities	Rank	% of U.S.
Peppermint oil	1	40.7
Barley	1	37.1
Potatoes	1	32.2
Hay, alfalfa	1	8.0
Sugarbeets	2	18.3
Hops	2	15.9
Onion, dry	4	10.8
Wheat, spring	4	9.2
Lentils	4	2.6
Dry edible beans	5	3.5
Corn silage	5	5.5
Dry edible peas	5	6.5
Haylage	6	5.9
Wheat, all	6	4.6
Wheat, winter	8	3.6
Hay, all	8	3.8

Livestock and Livestock Products

Cheese	3	7.3
Milk	3	7.3
Milk cows	3	7.0
Wool	7	6.3
Sheep and lambs	7	4.5
Cattle and calves, all	11	2.8
Honey	12	2.4

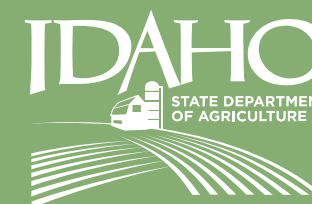
Source: USDA NASS 2022 Annual Statistical Bulletin

IDAHO



Idaho State Department of Agriculture
PO Box 7249, Boise, Idaho 83707
P: 208.332.8530 - F: 208.334.2879

www.agri.idaho.gov
www.idahopreferred.com



Updated: February 2023

AGRICULTURE IN IDAHO

Idaho agriculture is diverse, abundant and rooted in our history. The state has nearly **25,000 farms and ranches** which produce more than **185 different commodities**. Idaho ranks in the top ten in the nation in 30 of those commodities. Idaho is the **third-largest agricultural state in the West** and **second in net farm income**. Agriculture remains a fundamentally important part of Idaho's economy, communities and way of life contributing:

2021 Agriculture Cash Receipts: **\$8.6 billion**
 +
 Processed Food & Beverage Sales: **\$11.6 billion***

From fries to cheese to wine, Idaho is producing quality products to feed the world and fuel our state. Together, agriculture and food processing generates **17% of Idaho's total economic output in sales and 12.5% of GDP**.

*Source: IMPLAN 2019 data

Idaho seed production is recognized globally. Idaho grows **70% of the world's hybrid temperate sweet corn seed** and ranks among the leading suppliers of alfalfa, field bean, garden bean and Kentucky bluegrass seed in the nation.

Idaho vegetable seed production also includes carrot, onion, turnip, lettuce and many more.

Idaho's agriculture + food & beverage processing is over \$20 BILLION

2021 TOP IDAHO AGRICULTURE EXPORTS

Commodity	\$ (Millions)
Dairy products	\$558.10
Wheat	\$379.20
Processed vegetables	\$355.80
Beef and veal	\$240.90
Fresh vegetables	\$176.40
Feeds and other feed grains	\$128.30
Other livestock products	\$80.50
Processed grain products	\$62.80
Corn	\$33.30
Hides and skins	\$19.60
Other poultry products	\$13.30
Oilseeds	\$6.30
Pork	\$6.00
Vegetable oils	\$0.70
Other plant products	\$596.70
Total agricultural exports	\$2,657.70

Source: USDA ERS 2022 State Ag Exports - published Oct



Try to eat this

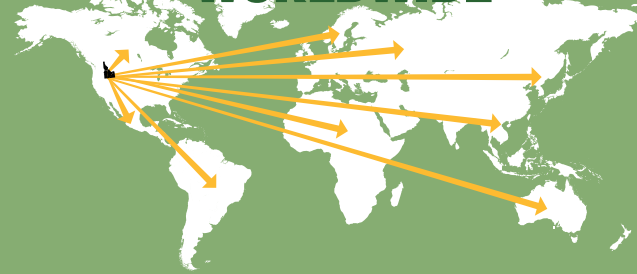
EVERY DAY

If Idahoans had to eat all products produced within the state, every resident would need to consume:

137 slices of bread
38 potatoes
3 pounds of sugar
2 pounds of cheese
2 pounds of beef
1 cup of beans

Source: WiserTrade 2022 data

Over **\$2.6 Billion** of Idaho's produce, grains, meats, dairy & seeds are sold **WORLDWIDE**



Country	% Market Share
Canada	32%
Mexico	15%
China	11%
Korea, Republic Of	7%
Japan	5%
Netherlands	4%
Indonesia	3%
Australia	2%
Malaysia	2%
Thailand	2%
Philippines	2%
Hungary	1%
Bahrain	1%
Israel	1%
Other	13%

2021 TOP IDAHO COMMODITIES

Commodity	Acres Harvested	Value of Production (\$1000)
Milk	(NA)	\$3,069,044
Cattle & Calves	(NA)	\$1,415,074
Potatoes	314,500	\$1,117,481
Hay, all	1,240,000	\$945,552
Wheat, all	1,132,000	\$528,946
Sugarbeets	170,000	\$360,636
Barley	500,000	\$239,410
Corn, grain	120,000	\$148,680
Hops	9,700	\$104,964
Onions, all	10,900	\$63,959
Dry Beans	57,000	\$40,271
Peppermint	15,500	\$31,992
Honey	(NA)	\$7,110
Dry peas	28,000	\$5,738
Oats	13,000	\$4,446
Lentils	18,000	\$3,268
Haylage	140,000	N/A

Source: USDA NASS
 2022 Idaho Annual Statistical Bulletin / Agri-Facts

Nearly **1 OUT OF 6** **GALLONS** becomes globally exported dairy products.