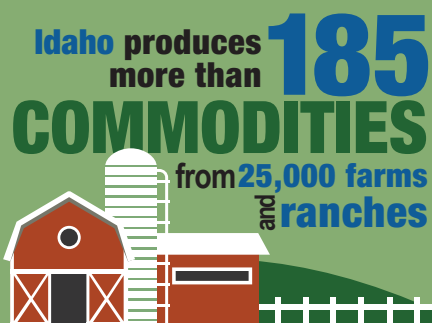


TOTAL CASH RECEIPTS

Year	Dollars (1,000)
2022	\$11,286,022
2021	\$8,576,652
2020	\$8,073,878
2019	\$8,038,390
2018	\$7,470,650
2017	\$7,332,409
2016	\$7,230,192

2022 Cash Receipts Breakdown Livestock & Crops

	Dollars (1,000)
Livestock cash receipts	\$6,858,897
Crops cash receipts	\$4,427,125
Total cash receipts	\$11,286,022



2021 IDAHO ORGANIC PRODUCTION

Number of Farms	245
Cropland Acres	177,132
Pasture/Rangeland	38,536
Total Acres	215,668
Total Sales	\$219,655,000

Source: USDA NASS 2021 Organic Survey

2022 IDAHO LIVESTOCK

	Total head
Cattle & Calves	2,500,000
• Milk Cows - 661,000	
Sheep & Lambs	220,000
Hogs & Pigs*	32,000



IDAHO LIVESTOCK

*2020 Idaho Hog numbers

2022 IDAHO FARMS AND FARMLAND

Number of Farms/Ranches	22,877
Land in Farms/Ranches (acres)	11,547,963
Average Size of Farm/Ranch (acres)	505
Irrigated Land (acres)	3,167,499
Average Age of Operator	57

Source: 2022 Agriculture Census

Idaho's renowned wine and viticulture industry is distinguished by three American Viticulture Areas (AVA):

Snake River Valley AVA - Approved 2007
Eagle Foothills AVA - Approved 2015
Lewis-Clark AVA - Approved 2016



2022 NATIONAL RANKINGS

Commodities	Rank	% of U.S.
Peppermint oil	1	40.8
Barley	1	34.2
Potatoes	1	30.3
Hay, alfalfa	1	9.5
Hops	2	15.9
Sugarbeets	3	19.9
Onion, dry	4	10.5
Wheat, winter	4	5.8
Hay, all	4	4.7
Dry edible peas	4	3.0
Lentils	4	1.5
Wheat, spring	5	6.0
Wheat, all	5	5.7
Dry edible beans	5	4.1
Haylage	7	5.0
Corn silage	8	4.7

Livestock and Livestock Products

Trout	1	42.2
Milk	3	7.3
Cheese	3	7.0
Milk cows	3	7.0
Wool	6	6.4
Sheep and lambs	7	4.4
Cattle and calves, all	11	2.8
Honey	14	2.2

Source: USDA NASS 2023 Annual Statistical Bulletin

IDAHO



Idaho State Department of Agriculture
PO Box 7249, Boise, Idaho 83707
P: 208.332.8530 - F: 208.334.2879
www.agri.idaho.gov
www.idahopreferred.com



Updated: March 2024

AGRICULTURE IN IDAHO

Idaho agriculture is diverse, abundant and rooted in our history. The state has over **24,000 farms and ranches** which produce more than **185 different commodities**. Idaho ranks in the top ten in the nation in 30 of those commodities. Idaho is the **third-largest agricultural state in the West** and **second in net farm income**. Agriculture remains a fundamentally important part of Idaho's economy, communities and way of life contributing:

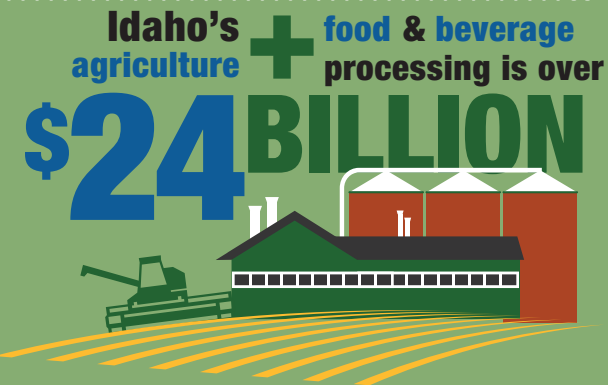
2022 Agriculture Cash Receipts: **\$11.3 billion**
 +
 Processed Food & Beverage Sales: **\$13.3 billion***

From fries to cheese to wine, Idaho is producing quality products to feed the world and fuel our state. Together, agriculture and food processing generates **17% of Idaho's total economic output in sales and 12.8% of GDP**.

*Source: IMPLAN 2022 data

Idaho seed production is recognized globally. Idaho grows **70% of the world's hybrid temperate sweet corn seed** and ranks among the leading suppliers of alfalfa, field bean, garden bean, and Kentucky bluegrass seed in the nation.

Idaho vegetable seed production also includes carrot, onion, turnip, lettuce and many more.



2022 TOP IDAHO AGRICULTURE EXPORTS

Commodity	\$ (Millions)
Dairy products	\$713.80
Wheat	\$384.50
Vegetables, processed	\$321.20
Beef and veal	\$306.60
Vegetables, fresh	\$186.90
Feeds and other feed grains	\$161.30
Other livestock products	\$81.90
Grain products, processed	\$73.10
Corn	\$31.40
Hides and skins	\$21.70
Other poultry products	\$17.60
Pork	\$6.70
Other oilseeds and products	\$5.40
Vegetable oils	\$0.60
Other plant products	\$583.60
Total agricultural exports	\$2,896.30

Source: USDA ERS 2023 State Ag Exports - published Oct



Try to eat this

EVERY DAY

If Idahoans had to eat all products produced within the state, every resident would need to consume:



Source: WisierTrade 2023 data

Over **\$2.9 Billion** of Idaho's produce, grains, meats, dairy & seeds are sold **WORLDWIDE**



Country	% Market Share
Canada	32%
Mexico	21%
China	8%
Japan	5%
Korea, Republic Of	4%
Netherlands	5%
Indonesia	2%
Australia	1%
Philippines	2%
Denmark	2%
Taiwan	1%
Spain	1%
Belgium	1%
Malaysia	1%
Other	15%

2022 TOP IDAHO COMMODITIES

Commodity	Acres Harvested	Value of Production (\$1000)
Milk	(NA)	\$4,290,024
Cattle & Calves	(NA)	\$1,750,628
Haylage	125,000	\$1,624,377
Potatoes	294,500	\$1,509,313
Hay, all	1,410,000	\$1,422,266
Wheat, all	1,077,000	\$528,946
Barley	540,000	\$456,143
Sugarbeets	170,000	\$403,815
Corn, grain	110,000	\$171,072
Onions, all	10,100	\$123,297
Hops	9,300	\$98,042
Beans, dry	44,000	\$45,936
Peppermint	13,000	\$24,980
Peas, dry	27,000	\$7,570
Honey	(NA)	\$7,251
Oats	16,000	\$5,018
Lentils	14,000	\$3,008

Source: USDA NASS
 2022 Idaho Annual Statistical Bulletin / Agri-Facts

