

FALL 2024



PRODUCE SAFETY Newsletter



LOOKING FORWARD:

NEXT YEAR'S SUCCESS AND ADAPTING TO THE NEW RULE



With our late harvest season coming to a close, we are working hard to prepare Idaho growers and packers for next year's inspections. The FDA's update to the Produce Safety Rule this spring introduced new requirements that understandably raised some questions. Our investigators continue to discuss these changes with those who have reached out, and we hope these conversations will be ongoing. Your feedback allows us to create useful resources that will help you comply with the new rule and are relevant to your experiences.

This coming winter presents an opportunity to learn together by continuing discussions, sharing resources, and continuously striving to provide consumers with safe food. To help you comply with the Produce Safety Rule (PSR) and prepare for next year's inspections, please continue reading.

UPCOMING ISDA GROWER TRAININGS

Attend one of our free trainings to learn about the Produce Safety Rule and **earn your certification.**

(Satisfying the FSMA CFR Part 112 requirement listed under §122.22(c).)

In addition, each training will cover all rule requirements,



with chances to discuss your unique situation with instructors experienced in Idaho's agricultural practices.

**To earn your certification, attendance and participation will be monitored by camera each day.*

Remote: Zoom 2-Day Training
December 10th - 11th, 2024
9:30 am - 2 pm MST each day

Remote: Zoom 2-Day Training
January 14th - 15th, 2024
9:30 am - 2 pm MST each day

Remote: Zoom 2-Day Training
February 14th - 15th, 2024
9:30 am - 2 pm MST each day

[Register or Learn More](#)

[Register or Learn More](#)

[Direct Link Coming Soon](#)

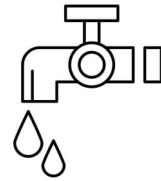
This course provides an extensive foundation of good agricultural practices (GAPs) in food safety, including a module for developing your operation's food safety plan.

NAVIGATING THE NEW RULE

Pre-Harvest Water Rule

Next year, large farms must comply with changes made earlier this spring to Pre-Harvest Agricultural Water. What does this mean? The new requirement is an annual water system assessment, which requires the grower to evaluate water sources, adjacent land uses, application methods, scientific methods, water tests, animal intrusion, potential hazards, and other factors unique to their operation. The grower is then required to analyze the information and document choices they make as a result of the analyzed data. In other words, you'll be required to perform an annual risk assessment after your compliance date.

To help farmers comply with this requirement, FDA has published an [online water assessment builder](#), and a [paper water assessment tool](#). ISDA investigators have discussed the online tool with Idaho farmers that have used it and, based on the feedback received, we are developing a similar tool that will be available on [our website](#) soon.



COMPLIANCE DATES

Large Farms
>\$500,000
- April 7th, 2025 -

Small Farms
\$250,000-500,000
- April 6th, 2026 -

Very Small Farms
\$25,000-250,000
- April 5th, 2027 -



ISDA SURVEY

Please help us to help you.



Do you understand the Pre-Harvest Agricultural Water Rule and what is required?

Would you be interested in an ISDA training focused specifically on the new water rule?

Yes

Yes

No

No

POST-HARVEST WATER RULE

As of January 26, 2025, all covered farms must comply with the Harvest and Post-Harvest Agricultural Water rule. These requirements are separate from Pre-Harvest Agricultural Water requirements.

While the FDA did not revise the Harvest and Post-Harvest Agricultural Water requirements, it did re-organize Subpart E to group provisions of a similar nature. Now, the location of some of the harvest and post-harvest requirements have changed. [This document](#) reflects the changes made to the regulation with that rule.

WHAT IS PRE-HARVEST WATER?



Pre-Harvest Agricultural Water is water used *prior* to harvest that is intended to or likely to contact covered produce.

This includes:

- Irrigation Water
- Flood Water During Growing Season
- Water Used with Spray Applications

WHAT IS HARVEST AND POST-HARVEST WATER?



Harvest and Post-Harvest Agricultural Water is water used *during or after* harvest that is intended to or likely to contact covered produce.

This includes:

- Flume/Dunk Tank Water
- Handwashing Water
- Water/Ice Used to Cool Down Produce
- Water Used to Wash Produce

WEBINAR: LATEST IN ONION FOOD SAFETY

Unpeeling the Science

Onions, Food Safety and the Fight Against Foodborne Pathogens

Join Drs. Linda Harris and Joy Waite-Cusic for a free, in-depth session on onion food safety, built on a decade of research shaping best practices.

Discover how their findings can help reduce

TUESDAY
DECEMBER 10TH

WEBINAR + Q&A
3:30 - 5:00 PM ET/
12:30 - 2:00 PM PT

UNPEELING THE SCIENCE: Onions

FOOD SAFETY AND THE FIGHT AGAINST FOODBORNE PATHOGENS



DR. JOY WAITE-CUSIC
ASSOCIATE PROFESSOR &
EXTENSION SPECIALIST
OREGON STATE UNIVERSITY



DR. LINDA HARRIS
PROFESSOR &
EXTENSION SPECIALIST
UC DAVIS




**REGISTER IN ADVANCE
TO ATTEND**

contactproducefoodsafety.ifas.ufl.edu

This work is supported by the Specialty Crops Research Initiative 2020-51181-32157 from the USDA National Institute of Food and Agriculture. Any opinions, findings, conclusions, or recommendations expressed in this presentation are those of the author(s) and do not necessarily reflect the view of the U.S. Department of Agriculture.



risks and improve safety standards for growers and packers. Stay for a live Q&A to gain insights and answers from leading industry experts.

Where: Remote via Zoom

When: Tuesday, December 10th @ 1:30pm MST

[Click Here to Register or Learn More](#)

RESOURCES



[Small Entity Compliance Guide](#)

FDA released [this guide](#) in September to help small and very-small farms in complying with the new Pre-Harvest Agricultural Water Rule.



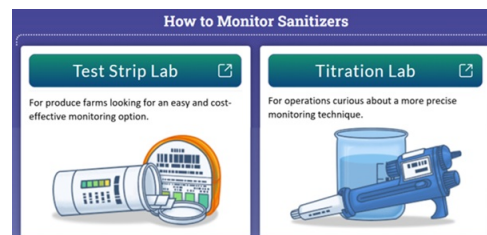
[New Registered Treatment](#)

On November 4th FDA and EPA released the first ever [registered antimicrobial treatment](#) for Pre-Harvest Agricultural Water named [SaniDate 12.0](#).



[FSMA News and Updates](#)

[This page](#) on our website is your one-stop-shop for all FDA, ISDA, and other general produce safety updates.

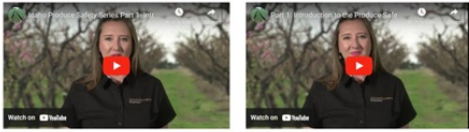


[Produce Safety Rule Resources](#)

Here you can find fact sheets for PSR subparts, worksheets to help determine status, and resources available from the [Produce](#)

[Safety Alliance \(PSA\).](#)

Part 1: Introduction to the Produce Safety Rule



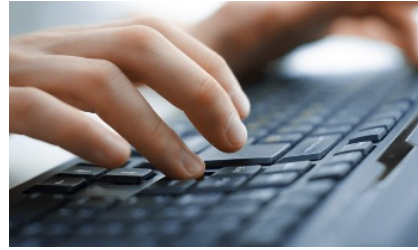
Part 1: Read Along Script (English)

Part 1: Read Along Script (Spanish)

Part 2: Idaho State Produce Safety Recordkeeping

[Training Videos](#)

The ISDA and University of Idaho Extension have created seven [videos](#) to enable producers and their staff come to a better understanding of the PSR in everyday operations.



[ISDA Online Forms](#)

Use our tool to help you [determine your farm's coverage](#), fill out your [verification form online](#), order [free materials](#), and [request an on-farm readiness review](#)- all on the same website!

WANT HELP WITH YOUR RECORDKEEPING?

Click below to follow the University of Idaho's step-by-step [Recordkeeping Guide!](#)



CONTACT US

LET US KNOW HOW WE ARE DOING!

PHONE - (208) 332-8502

EMAIL - fsma@isda.idaho.gov

FOLLOW ISDA ON SOCIAL MEDIA



Services (HHS) as part of a financial assistance award U2FFD007447 totaling \$438,111 with 100 percent funded by FDA/HHS. The contents are those of the author(s) and do not necessarily represent the official views of, nor an endorsement, by FDA/HHS, or the U.S. Government.

Idaho State Department of Agriculture | 2270 Old Penitentiary Road PO Box 7249 | Boise, ID
83707 US

[Unsubscribe](#) | [Update Profile](#) | [Constant Contact Data Notice](#)



Try email marketing for free today!