

SPRING 2025



PRODUCE SAFETY Newsletter



COMPLIANCE UPDATES: IMPORTANT DATE CHANGES AND RESOURCES



With spring underway, our team is here to help Idaho growers and packers stay up to date on regulation updates. The FDA has implemented many new changes regarding agricultural water and food traceability over the past two years, and we are here to help.

As a reminder, covered farms are currently inspected on a 3-year rotating basis. For those farms receiving an inspection this year, expect us to contact you soon and begin the scheduling process.

AG WATER COMPLIANCE DATES

PRODUCTION (PRE-HARVEST) AGRICULTURAL WATER



On March 28th, 2025, the FDA announced that production agricultural water compliance dates will be pushed back one year for each farm size, affecting all routine inspections.

[More Info](#)

**For-cause inspections will not be affected by this change.*

VERY SMALL FARMS

\$25,000 - \$250,000

April 5th, 2028

~~April 5th, 2027~~

SMALL FARMS

\$250,000 - \$500,000

April 5th, 2027

~~April 5th, 2026~~

LARGE FARMS

\$500,000 +

April 5th, 2026

~~April 5th, 2025~~



HARVEST AND POST-HARVEST AGRICULTURAL WATER

As of January 26th, all covered farms must be in compliance with the Produce Safety Rule requirements regarding agricultural water used in harvest and post-harvest activities.

[More Info](#)

VERY SMALL FARMS

\$25,000 - \$250,000

January 26th, 2025

SMALL FARMS

\$250,000 - \$500,000

January 26th, 2024

LARGE FARMS

\$500,000 +

January 26th, 2023

FOOD TRACEABILITY RULE

COMPLIANCE DATES FOR FSMA 204 EXTENDED

On March 20th, 2025, FDA the announced that the [Food Traceability Rule](#) (FSMA 204) compliance dates will be extended by 30 months.

This extension is intended to give the food industry additional time to ensure full coordination across the supply chain and comply with the rule's traceability requirements.

DID YOU KNOW?



*Note: Qualified exempt farms are already required to submit a new verification form annually. If your operation holds a qualified exemption and you have not submitted a new verification for 2024, please **give us a call!** --->*

Farms must notify ISDA any time there is a significant change with their operation such as average produce and/or food sales, or a change in produce grown. Simply give us a call, send an email, or submit a new [verification form](#).

By providing this information, we can update your operation to ensure your status is current.

(208) 332-8502

RESOURCES



[Small Entity Compliance Guide](#)

FDA released [this guide](#) in September to help small and very-small farms in complying with the new Pre-Harvest Agricultural Water Rule.



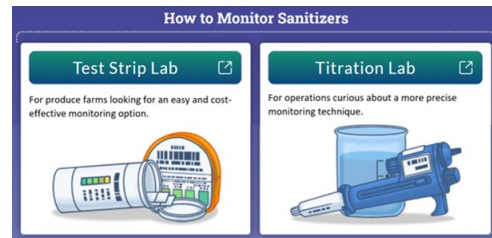
[New Registered Treatment](#)

On November 4th FDA and EPA released the first ever [registered antimicrobial treatment](#) for Pre-Harvest Agricultural Water named [SaniDate 12.0](#).



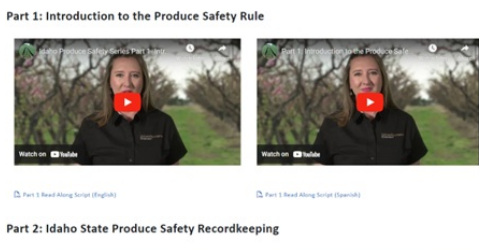
[FSMA News and Updates](#)

[This page](#) on our website is your one-stop-shop for all FDA, ISDA, and other general produce safety updates.



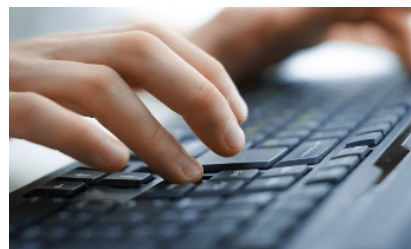
[Produce Safety Rule Resources](#)

Here you can find fact sheets for PSR subparts, worksheets to help determine status, and resources available from the [Produce Safety Alliance \(PSA\)](#).



[Training Videos](#)

The ISDA and University of Idaho Extension have created seven [videos](#) to enable producers and their staff come to a better understanding of the PSR in everyday operations.



[ISDA Online Forms](#)

Use our tool to help you [determine your farm's coverage](#), fill out your [verification form online](#), order [free materials](#), and more- all on the same website!

CONTACT US

LET US KNOW HOW WE ARE DOING!

PHONE - (208) 332-8502

EMAIL - fsma@isda.idaho.gov

FOLLOW ISDA ON SOCIAL MEDIA



This resource is supported by the Food and Drug Administration (FDA) of the U.S. Department of Health and Human Services (HHS) as part of a financial assistance award U2FFD007447 totaling \$438,111 with 100 percent funded by FDA/HHS. The contents are those of the author(s) and do not necessarily represent the official views of, nor an endorsement, by FDA/HHS, or the U.S. Government.

Idaho State Department of Agriculture | 2270 Old Penitentiary Road PO Box 7249 | Boise, ID 83707 US

[Unsubscribe](#) | [Update Profile](#) | [Constant Contact Data Notice](#)



Try email marketing for free today!