

Animal Health Laboratory Newsletter

Lab Calendar

Please note the AHL will be closed in observances of the following holidays:

- Juneteenth | June 19, 2026
- 4th of July (observed) | July 3, 2026
- Labor Day | September 7, 2026

SCAN ME!



New Testing Offered!

The AHL is pleased to announce that we have two new tests available for veterinarians.



Caseous Lymphadenitis (CL) ELISA testing on caprine and ovine serum - \$13.00

- Minimum of 0.5mL of serum (2.0mL preferred); do not use tubes with additives.
- Samples set up upon request

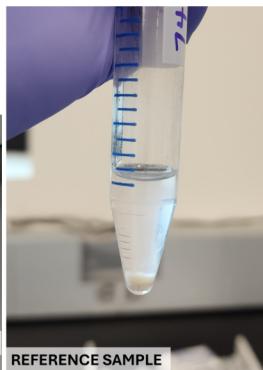
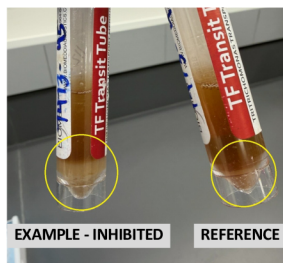
Avian Influenza PCR and ELISA testing on raw bovine milk - no charge

- Samples submitted in 15 or 50mL screw-top tubes only; no more than 75% full.
- Samples must be received by Wednesdays at 12:00pm, and be labeled "MOLECULAR".
- Scan to see our website for additional requirements when submitting samples!

Trichomonas Dilution Retest

Last year the AHL implemented additional clarification procedures to retest Trich samples that fail PCR testing due to inhibitors. However, we have continued to see a significant amount of inhibited samples. To minimize the number of re-extractions, the ISDA has identified an intermediary dilution step. These processes involve diluting the sample in hopes to reduce the amount of inhibitors, and if that fails, then we will re-extract the sample utilizing the more robust extraction procedure. These new techniques have proven to work well and they will help reduce the number of samples that we report as failed tests. Unfortunately, these processes require additional testing materials and staff time. To offset the AHL costs, the laboratory will be charging **\$20 per sample or pool** that require these additional steps starting **July 1st, 2026**.

It is impossible to visually quantify the presence of PCR inhibitors in samples, however, we have provided a few examples to use as a guide, but do not represent defined acceptable thresholds.



Fee Schedule Updates

To help keep up with the additional rising costs of testing and supplies, the laboratory will be updating our fee schedule effective **July 1, 2026**.

Updated charges this year include:

1. Trichomonas Dilution Retest
\$20/SAMPLE



-Applied to samples that require a dilution step prior to performing a clarification step (described on left).

2. Sample Handling Fee
\$35/HOUR

-Applied to improperly packaged/shipped samples or paperwork that requires significant additional time to remedy. Clients will be contacted to discuss future solutions/remedies when possible.

The full updated price list is available on our website under the "Laboratory Services and Fees" section at the web address below!



New Trich Tubes Approved!

During the FY26 Trich season, new tubes were evaluated for compatibility with the Trich testing platform and have been officially approved as acceptable containers for Trich sampling.

1. 1X PBS tubes from BioMed, the supplier of TF Transit tubes and InPouches.
 2. 10-12mL screw-top centrifuge tubes, with 3-5mL of sterile PBS.
- See the ISDA website for the full list of approved sample containers.

Idaho State Department of Agriculture
Animal Health Laboratories
 2300 Old Penitentiary Rd Boise, ID 83712
 Phone: 208-332-8570
 Email: ahl@isda.idaho.gov
 Website: <https://agri.idaho.gov>

