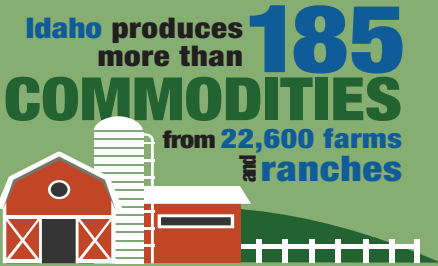


TOTAL CASH RECEIPTS

Year	Dollars (1,000)
2023	\$10,878,901
2022	\$11,286,022
2021	\$8,576,652
2020	\$8,073,878
2019	\$8,038,390
2018	\$7,470,650
2017	\$7,332,409

2023 Cash Receipts Breakdown
Livestock & Crops

	Dollars (1,000)
Livestock cash receipts	\$6,350,156
Crops cash receipts	\$4,528,745
Total cash receipts	\$10,878,901



2021 IDAHO ORGANIC PRODUCTION

Number of Farms	245
Cropland Acres	177,132
Pasture/Rangeland	38,536

Total Acres	215,668
Total Sales	\$219,655,000
Source: USDA NASS 2021 Organic Survey	

2023 IDAHO LIVESTOCK

	Total head
Cattle & Calves	2,550,000
Dairy Cows	663,000
Sheep & Lambs	235,000
Hogs	24,000



Source: USDA 2023 State Agriculture Overview

2023 IDAHO FARMS AND FARMLAND

Number of Farms/Ranches	22,600
Land in Farms/Ranches (acres)	11,500,00
Average Size of Farm/Ranch (acres)	509
Irrigated Land (acres)	3,167,499
Average Age of Operator	57

Source: USDA NASS 2024 Annual Statistical Bulletin and Agriculture Census

Idaho’s renowned wine and viticulture industry is distinguished by three American Viticulture Areas (AVA):

- Snake River Valley AVA - Approved 2007
- Eagle Foothills AVA - Approved 2015
- Lewis-Clark AVA - Approved 2016



2023 NATIONAL RANKINGS

Commodities	Rank	% of U.S.
Peppermint oil	1	40.3
Potatoes	1	32.6
Barley	1	32.5
Hay, alfalfa	1	9.0
Sugarbeets	2	19.8
Hops	2	16.2
Onion, dry	4	11.3
Wheat, spring	4	6.4
Lentils	4	3.2
Haylage	5	7.0
Wheat, all	5	4.9
Dry edible peas	5	1.6
Hay, all	6	4.4
Dry edible beans	6	3.6
Corn silage	7	5.2
Wheat, winter	8	4.5

Livestock and
Livestock Products

Trout	1	36.9
Milk	3	7.4
Cheese	3	7.1
Milk cows	3	7.1
Wool	5	6.7
Sheep and lambs	6	4.7
Honey	10	2.1
Cattle and calves, all	11	2.9

Source: USDA NASS 2024 Annual Statistical Bulletin



Idaho State Department of Agriculture
PO Box 7249, Boise, Idaho 83707
P: 208.332.8530
www.agri.idaho.gov
www.idahopreferred.com

IDAHO



Updated: May 2025

AGRICULTURE IN IDAHO

Idaho agriculture is diverse, abundant and rooted in our history. The state has over **22,600 farms and ranches** which produce more than **185 different commodities**. Idaho ranks in the top ten in the nation in over 20 of those commodities. Idaho is the **third-largest agricultural state in the West** and **second in net farm income**. Agriculture remains a fundamentally important part of Idaho's economy, communities and way of life contributing:

2023 Agriculture Cash Receipts: **\$10.8 billion**
+
Processed Food & Beverage Sales: **\$15.3 billion***

From fries to cheese to wine, Idaho is producing quality products to feed the world and fuel our state. Together, agriculture and food processing generates **17% of Idaho's total economic output in sales and 12.8% of GDP**.

*Source: IMPLAN 2023 data

Idaho seed production is recognized globally. Idaho grows **70% of the world's hybrid temperate sweet corn seed** and ranks among the leading suppliers of alfalfa, field bean, garden bean, and Kentucky bluegrass seed in the nation.

Idaho vegetable seed production also includes carrot, onion, turnip, lettuce and many more.



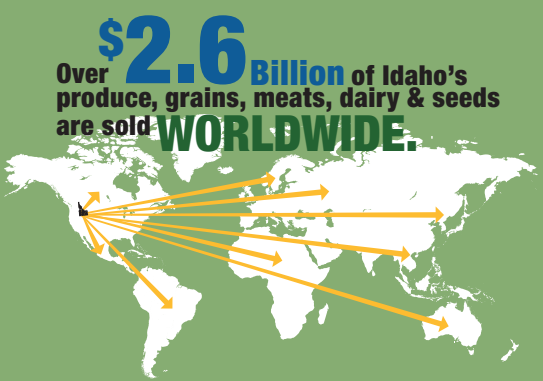
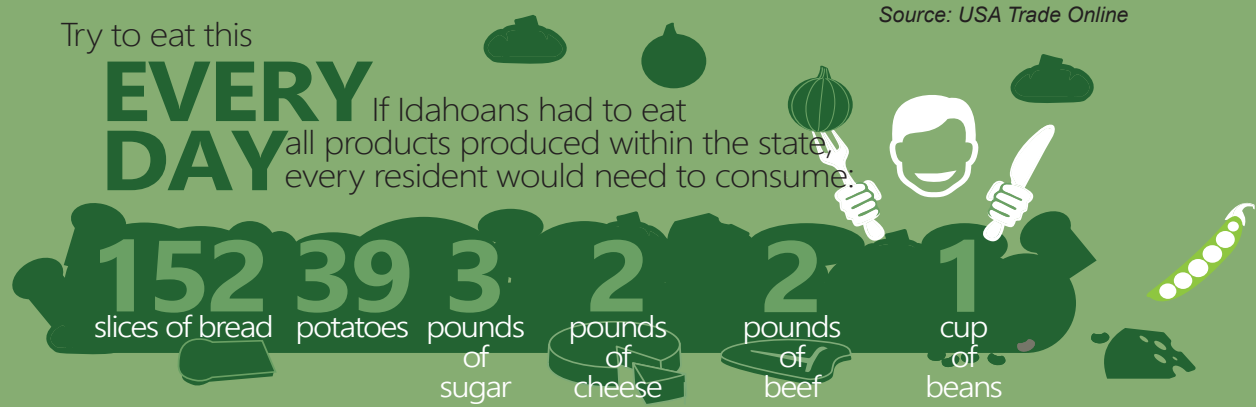
2023 TOP IDAHO AGRICULTURE EXPORTS

Commodity	\$ (Millions)
Dairy products	\$602.40
Other plant products	\$554.50
Vegetables, processed	\$332.00
Wheat	\$309.00
Beef and veal	\$257.00
Vegetables, fresh	\$170.30
Feeds and other feed grains	\$151.70
Grain products, processed	\$82.80
Other livestock products	\$69.40
Corn	\$24.70
Hides and skins	\$20.10
Other poultry products	\$13.90
Other oilseeds and products	\$9.90
Pork	\$5.90
Vegetable oils	\$0.80
Total agricultural exports	\$2,604.30

Source: USDA ERS 2023 State Ag Exports - published March 2025



.....



Country	% Market Share
Canada	31%
Mexico	19%
China	8%
Korea, South	6%
Japan	5%
Netherlands	5%
Indonesia	2%
Australia	2%
Taiwan	2%
Philippines	2%
Belgium	1%
Denmark	1%
Spain	1%
Colombia	1%
Malaysia	1%
Guatemala	1%
Brazil	1%
Other	12%

Source: USA Trade Online

2023 TOP IDAHO COMMODITIES

Commodity	Acres Harvested	Cash Receipts (\$1000)
Milk	(NA)	\$3,459,770
Cattle & calves	(NA)	\$2,604,849
Potatoes	329,500	\$1,336,914
Hay	1,390,000	\$614,487
Wheat, all	1,035,000	\$608,182
Sugarbeets	174,000	\$465,230
Barley	540,000	\$421,581
Corn, grain	115,000	\$142,822
Chicken eggs	(NA)	\$119,571
Onions, all	10,900	\$110,138
Hops	8,645	\$91,006
Dry edible beans	34,700	\$79,641
Trout	(NA)	\$36,948
Mint	12,300	\$22,917
Floriculture	(NA)	\$20,926
Hogs	(NA)	\$19,563
Mustard seed	(NA)	\$10,503
Lentils	17,000	\$7,271
Safflower	25,500	\$5,917
Honey	(NA)	\$4,799
Dry peas	18,000	\$3,567
Oats	12,000	\$3,206
Wool	(NA)	\$2,860

Source: USDA NASS Farm Income and Wealth Statistics- Cash receipts by commodity

